

# H

## Care Facilities

For care facilities, it is recommended to use the telephone line that is connected to the fax machine. This is an analog telephone line, which is the type of line the monitor requires. Oftentimes the telephone lines in a care facility are incompatible with the CareLink Monitor because they are digital or multi-line systems. The fax line is an analog telephone line that will allow the CareLink Monitor to send the transmission.

## No telephone landline, no compatible telephone service, or patient frequently travels

There is a cellular accessory option, which connects securely to any CareLink Monitor and allows patients to transmit data using cellular signals instead of an analog telephone line or cell phone. Patients can call 1 (877) 609-6698 to order a cellular accessory. Patients will be charged a monthly service charge of \$10.99, plus any applicable taxes. Medtronic provides the accessory hardware free of charge.

**Intended Use:** The Medtronic CareLink® Monitor and the CareLink® Network are indicated for use in the transfer of patient data from some Medtronic implantable cardiac devices based on physician instructions and as described in the product manual. These products are not a substitute for appropriate medical attention in the event of an emergency and should only be used as directed by a physician. **Contraindications:** There are no contraindications for the CareLink Monitor. **Warnings and Precautions:** The CareLink Monitor must only be used for interrogating compatible Medtronic implantable devices. The CareLink Monitor is intended for use within the prescribing country.

See the device manual for detailed information regarding the instructions for use, indications, contraindications, warnings, precautions, and potential complications/adverse events. For further information, please call Medtronic at 1 (800) 328-2518 and/or consult Medtronic's website at [www.medtronic.com](http://www.medtronic.com).

**Caution:** Federal law (USA) restricts this device to sale by or on the order of a physician.



# Tips for Using Your Battery-Operated Medtronic CareLink® Monitor

(Models 2490G/2490H/2490J)

# A

## Shipping Information

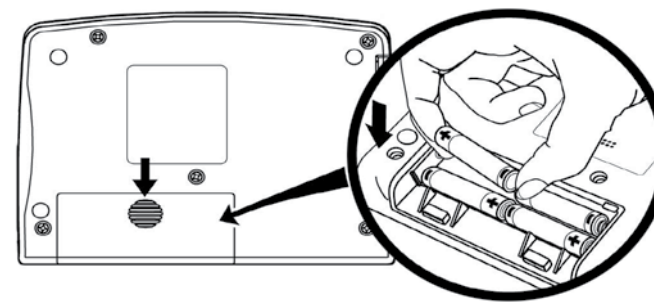
You should receive your monitor a few weeks after your clinic orders it for you. The monitor will be shipped in a plain brown box to protect your medical privacy. You may need to sign for it when it arrives. If you have not received your monitor 30 days after it's ordered, please contact your clinic.

**If you have questions about your monitor, contact your clinic or Medtronic Patient Services at 1 (800) 929-4043, Monday-Friday 7 am-6 pm Central Time.**

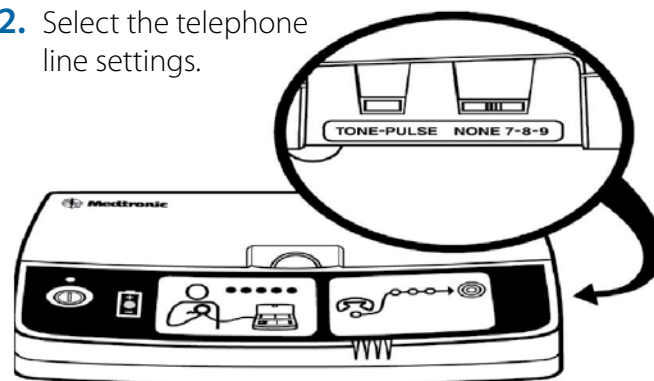
# B

## Setting Up Your Monitor

1. Install four AA-sized batteries, which are included with the monitor.

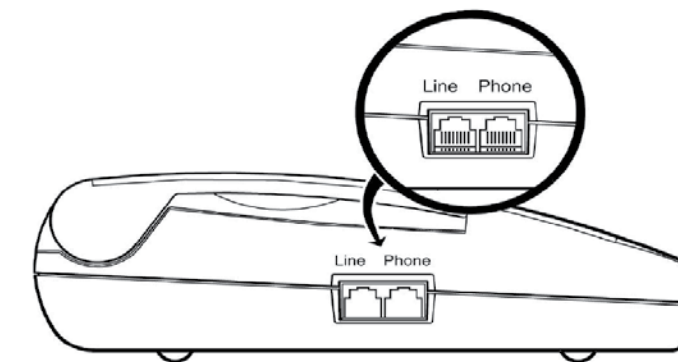


2. Select the telephone line settings.



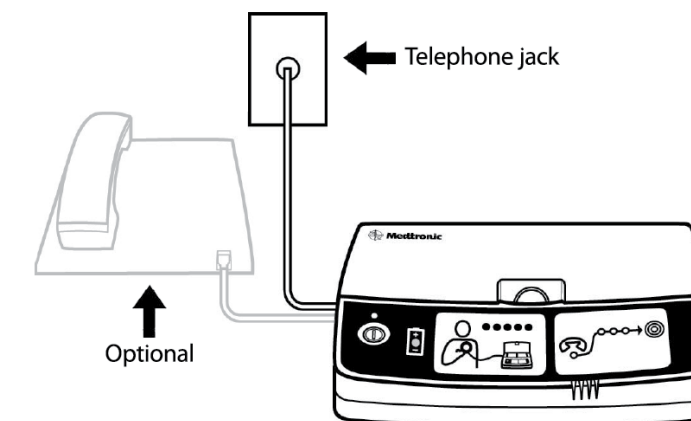
- For touch tone telephone (push button), set switch to "Tone."
- For rotary dial telephone, set switch to "Pulse."
- For home use, switch should be set to "None."
- For hotel, business, or other, set the switch to match your location prefix number: 7, 8, or 9.

3. Plug one end of the telephone cord into either of the telephone plugs on the side of the monitor.



4. Plug the other end of the telephone cord into the telephone wall jack.

**Optional:** You may also connect a telephone to the monitor, but the telephone is not required for the monitor to work properly.



**C****Using Your Monitor**

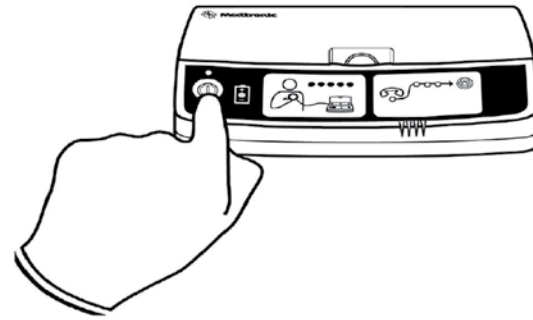
Instructions will be in the box and shipped with your CareLink® Monitor. Also included are: Video/DVD, four standard AA batteries, standard telephone cord, warranty information, patient manual, and instruction card. Please review these items before using your monitor.

**D****When to Use Your Monitor**

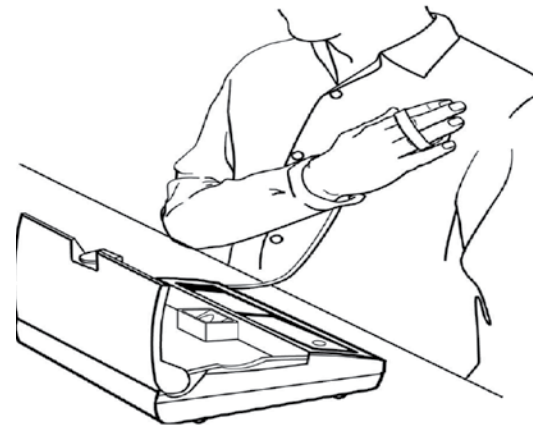
You will be informed by your clinic when to transmit your device information. Do not use your monitor unless instructed to do so by your clinic.

**E****How to Do a CareLink Transmission**

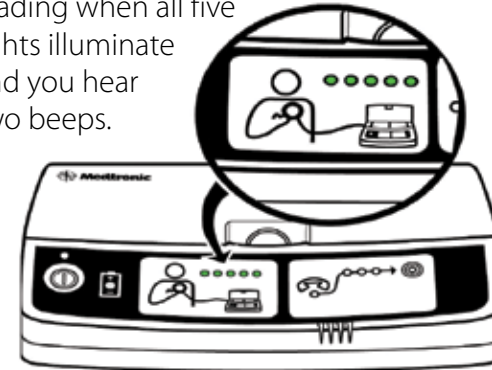
1. Press the power button.



2. Hold the antenna snugly over the implanted heart device.



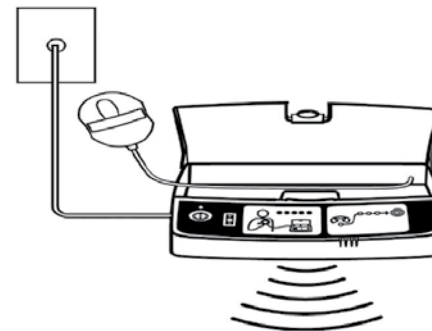
3. Watch the five green transmission status lights illuminate. The monitor is done reading when all five lights illuminate and you hear two beeps.



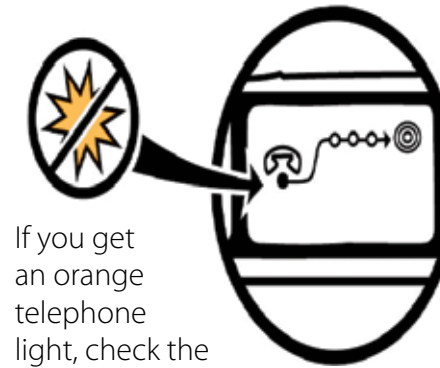
If you get an orange antenna position light, slowly reposition the antenna over the device until the green lights illuminate.



4. When you hear the monitor dialing, remove the antenna from over your implanted heart device.



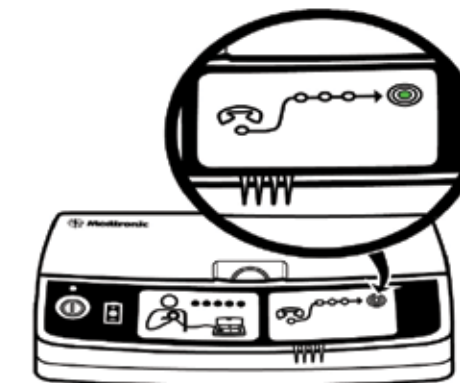
5. The monitor automatically dials the pre-programmed 1-800 number and sends the information from your implanted heart device. When you hear the monitor dialing, remove the antenna from over your implanted heart device.



If you get an orange telephone light, check the connection of the telephone cord and the wall jack to ensure secure connections.

6. You are finished when the sending complete light (bull's-eye) lights up and you hear two beeps.

Allow the monitor to turn itself off after approximately 3 minutes.

**F****Monitor Troubleshooting Tips**

- If the monitor does not turn on, make sure batteries are installed correctly, or replace batteries in the monitor.
- Place the antenna over your implanted device.
- You may hear a tone from your implanted device when the antenna is placed over it (as during an office visit).
- If your monitor shuts off after the third light, try adding more layers between the antenna and your implanted device. A dry washcloth/towel (folded over to add multiple layers) works well.

**G****Telephone Troubleshooting Tips**

- Verify telephone setting in Step 2 in the "Setting Up Your Monitor" section.
- You must use an analog (landline) telephone line to send information (home telephone line, fax line).
- The monitor will not work on a digital VoIP or fiber optic telephone line. A DSL line may require a filter. Your telephone company will be able to tell you what type of line you have in your home.
- The monitor dials out a preprogrammed toll-free 1-800 number. You cannot use your telephone when the monitor is sending a transmission.