

SETUP INSTRUCTIONS FOR MYCARELINK™ PATIENT MONITOR

Wireless devices, such as Implantable Cardioverter Defibrillators (ICDs): information is sent automatically, usually while you sleep, after you send information manually the first time

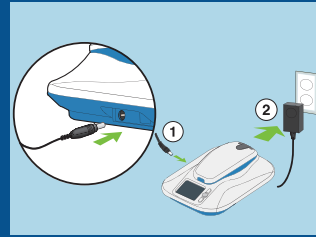
- 1) Your monitor should be set up within 10 feet of where you sleep, preferably on a nightstand.
- 2) The monitor should receive adequate cellular signal.
- 3) Make sure your monitor is always on and plugged into a power outlet.
- 4) **Sending Information the First Time:** Follow the steps on this tip card for sending your first (manual) transmission.
- 5) **Ongoing Use:** Your device will automatically "wake up" and send your data on your scheduled transmission dates. Sometimes your clinic may ask you to send a manual transmission. If this happens, follow the steps for sending your first (manual) transmission.

Non-wireless devices, such as Pacemakers (IPGs): information is sent manually each time

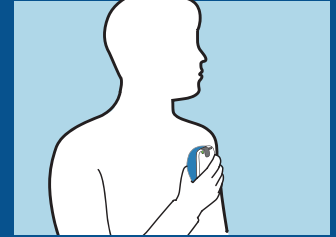
- 1) Place the monitor where you can sit comfortably and see the front of the monitor.
- 2) The monitor should be placed in a location that receives adequate cellular signal.
- 3) Make sure your monitor is always on and plugged into a power outlet.
- 4) Follow the steps for sending your first transmission every time you are scheduled to send information to your clinic.

STEPS FOR SETTING UP AND USING YOUR MONITOR

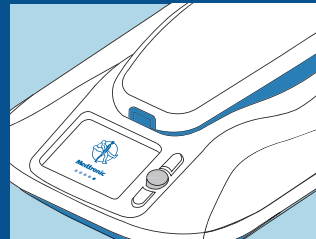
STEP 1



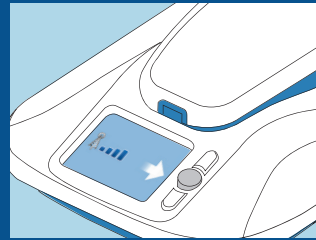
STEP 5



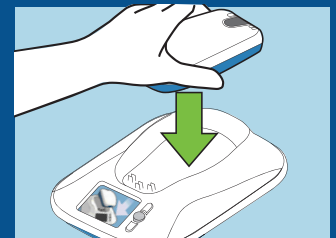
STEP 2



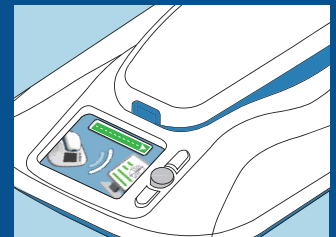
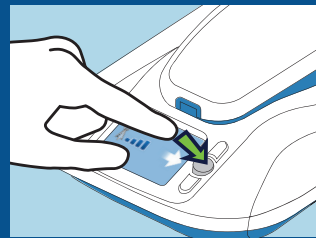
STEP 3



STEP 6



STEP 4



Please refer to your patient manual for complete setup and use instructions.

Medtronic

Additional Information

The Medtronic MyCareLink™ Patient Monitor is a prescription product indicated for use in the transfer of patient data from some Medtronic implantable cardiac devices based on physician instructions and as described in the product manual. The MyCareLink Patient Monitor transmissions to the CareLink™ Network are subject to cellular service availability. The MyCareLink Patient Monitor must be on and in range of the device in order to wirelessly receive data from your implanted device. This product is not a substitute for appropriate medical attention in the event of an emergency and should only be used as directed by a physician.

The Medtronic CareLink Service is prescribed by your physician. This service is not for everyone. Please talk to your doctor to see if it is right for you. Your physician should discuss all potential benefits and risks with you. Although many patients benefit from the use of this service, results may vary. For further information, please call Medtronic CareLink Patient Services at 1 (800) 929-4043 (8:00 a.m. to 5:00 p.m., Monday-Friday, Central time) or see the Medtronic website at www.medtronic.com.

Medtronic
710 Medtronic Parkway
Minneapolis, MN 55432-5604
USA
Tel: (763) 514-4000
Fax: (763) 514-4879

Toll-free: 1 (800) 328-2518
(24-hour technical support for
physicians and medical
professionals)

UC201602327 EN © Medtronic 2015.
Minneapolis, MN. All Rights Reserved.
Printed in USA. 09/2015